

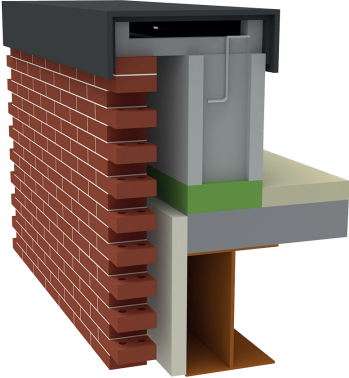
### Introduction

ClimaSpec CI Structural Thermal Break range provides thermal bridging solutions that increase the energy efficiency of buildings, thermally separating non-moment connections that penetrate the building envelope.

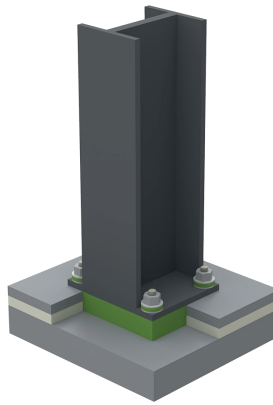
ClimaSpec CI is manufactured in different grades for light to heavy load applications. Product material properties vary depending on the controlled product density. This provides designers with the flexibility to select the most suitable product depending on connection requirements.

### Benefits of Using ClimaSpec CI:

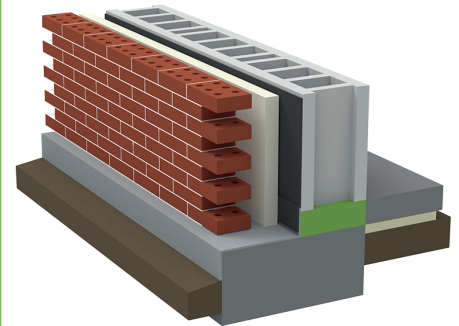
- / Achieve or exceed energy code compliance
- / Manufactured in various grades
- / Contribute towards LEED Certification
- / Compatible with adhesives, concrete, grout, rebar
- / Compatible with new build and retrofit projects
- / Multiple thicknesses available
- / Reduce condensation risk
- / Provided in flat sheets or custom fabricated
- / Made in the USA
- / Cost-effective solution



Parapet



Column Base



Foundation to Wall

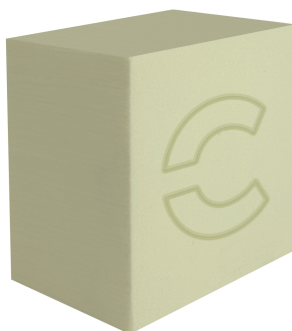
### Typical Applications for ClimaSpec CI:

- / Cold storage
- / Parapets
- / Foundation to wall
- / Roof anchor systems
- / Window framing
- / Roof penetrations
- / Door thresholds
- / Columns

### Structural Connections for ClimaSpec CI:

- / Steel to steel
- / Steel to concrete/masonry
- / Steel to timber
- / Concrete to concrete

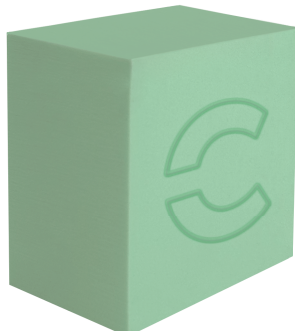
### Product Range:



#### CLIMASPEC CI 10

/ 10 lb/ft<sup>3</sup>

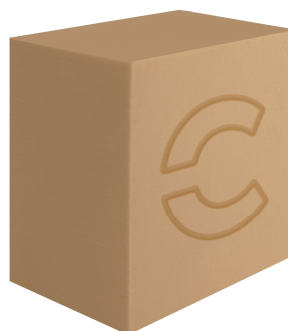
/ Low compressive load applications



#### CLIMASPEC CI 15

/ 15 lb/ft<sup>3</sup>

/ Low to medium compressive load applications



#### CLIMASPEC CI 20

/ 20 lb/ft<sup>3</sup>

/ Medium to high compressive load applications



#### CLIMASPEC CI 31

/ 31 lb/ft<sup>3</sup>

/ High compressive load applications

### Sheet Size

Thickness	Max. Sheet Size
1/2"	96" x 48"
1"	96" x 48"
2"	96" x 48"

Note: Custom thicknesses and sizes available upon request.

### Parapet Connection

