

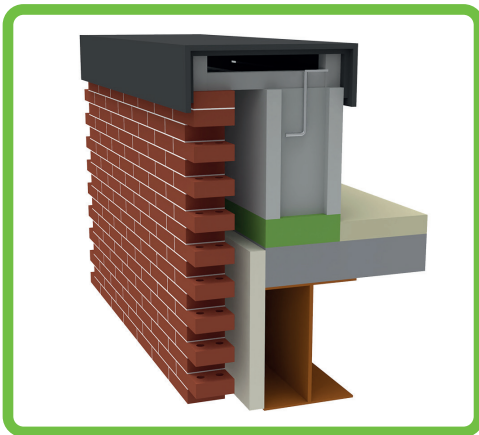
Introduction

ClimaSpec CI Structural Thermal Break range provides thermal bridging solutions that increase the energy efficiency of a building by thermally separating non-moment connections that penetrate the building envelope.

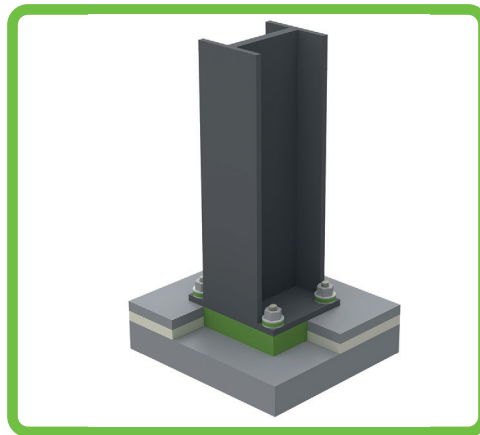
ClimaSpec CI is manufactured in different grades for light to heavy load applications. Product material properties vary depending on the controlled product density. This provides designers with the flexibility to select the most suitable product depending on connection requirements.

Benefits of Using ClimaSpec CI:

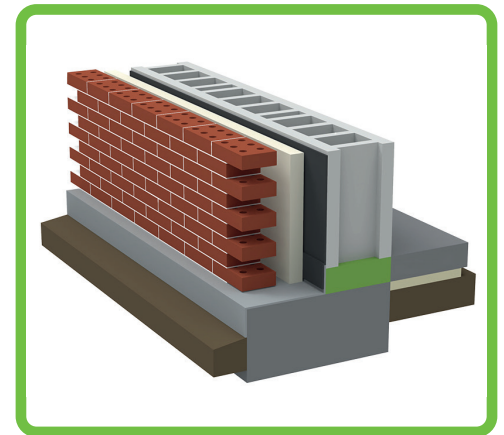
- / Achieve or exceed energy code compliance
- / Contribute towards LEED Certification
- / Compatible with new build and retrofit projects
- / Reduce condensation risk
- / Made in the USA
- / Manufactured in various grades
- / Compatible with adhesives, concrete, grout, rebar
- / Multiple thicknesses available
- / Provided in flat sheets or custom fabrication
- / Cost effective solution



Parapet



Column Base



Foundation to Wall

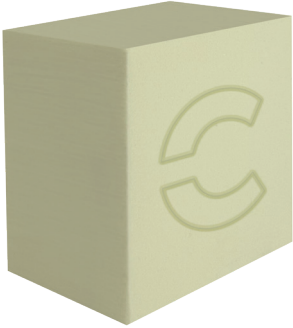
Typical Applications for ClimaSpec CI:

- / Cold storage
- / Foundation to wall
- / Window framing
- / Door thresholds
- / Parapets
- / Roof anchor systems
- / Roof penetrations
- / Columns

Structural Connections for ClimaSpec CI:

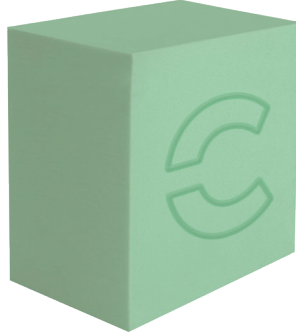
- / Steel to steel
- / Steel to concrete/masonry
- / Steel to timber
- / Concrete to concrete

Product Range:



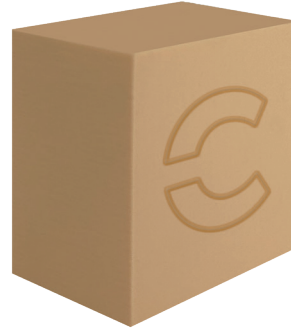
CLIMASPEC CI 10

10 lb/ft³
Low compressive load applications



CLIMASPEC CI 15

15 lb/ft³
Low to medium compressive load applications



CLIMASPEC CI 20

20 lb/ft³
Medium to high compressive load applications



CLIMASPEC CI 31

31 lb/ft³
High compressive load applications

Sheet Size

Thickness	Max. Sheet Size
1/2"	96" x 48"
1"	96" x 48"
2"	96" x 48"

Note: Custom thicknesses and sizes available upon request

Steel to Steel Connection

